

Version: 1.0 –  
Approved date:  
Review date: April 2020

# British School of Gran Canaria

## **Accessibility Plan**

### Policy Document

---



# THE BRITISH SCHOOL OF GRAN CANARIA

## ACCESSIBILITY PLAN POLICY

---

### 1. Scope

This Accessibility Plan applies to all staff and students within the British School of Gran Canaria and all visitors to the school within the school during normal school hours. This Accessibility Plan is drawn up in compliance with current legislation and requirements as specified in Schedule 10 of the Equality Act 2010, relating to Disability, and “The Equality Act 2010 and Schools – Departmental advice for school leaders, school staff, governing bodies and local authorities” (Department for Education UK, May 2014).

According to the Equality Act 2010 a person has a disability if:

- a) He or she has a physical or mental impairment, and
- b) The impairment has a substantial and long-term adverse effect on his or her ability to carry out normal day-to-day activities.

The accessibility plan must be used in conjunction with the school’s Learning Support Policy.

### 2. Definitions

Throughout this document the following words, terms and phrases have the following meanings:

**Staff** – adults who are employed and work within The British School of Gran Canaria.

**Normal school hours** – refers to the school day which runs from 8.45am to 3.35pm, but also includes Enrichment time after the end of the school day from 3:50-4:50pm.

**BSGC** – The British School of Gran Canaria

**Pupils** – synonymous with students.

### 3. Rationale

BSGC aims to provide a welcoming, supportive, and emotionally and physically secure learning and working environment for every member of the school community. BSGC recognises and promotes human rights, and values the diversity of culture, beliefs, practices, customs, physical and intellectual abilities and life experience of the whole school community.

### 4. Our commitment

BSGC aims to provide an environment that enables full curriculum access for all pupils, staff, parents and visitors regardless of their education, physical, sensory, social, spiritual, emotional and cultural needs. We are committed to taking positive action in the spirit of the Equality Act 2010 with regard

to disability and to developing a culture of inclusion, support and awareness within the school. This school is enriched by and celebrates the diversity of our whole school community. We work hard to ensure there are no invisible children here, recognising everyone's uniqueness and success. Provision for disabled pupils at BSGC is closely connected with the provision for children with special educational needs. The school recognises and values parents' knowledge of their child's disability and its effect on their ability to carry out everyday activities and respects the parents' and child's right to confidentiality.

## **5. Current provision – Tafira Site**

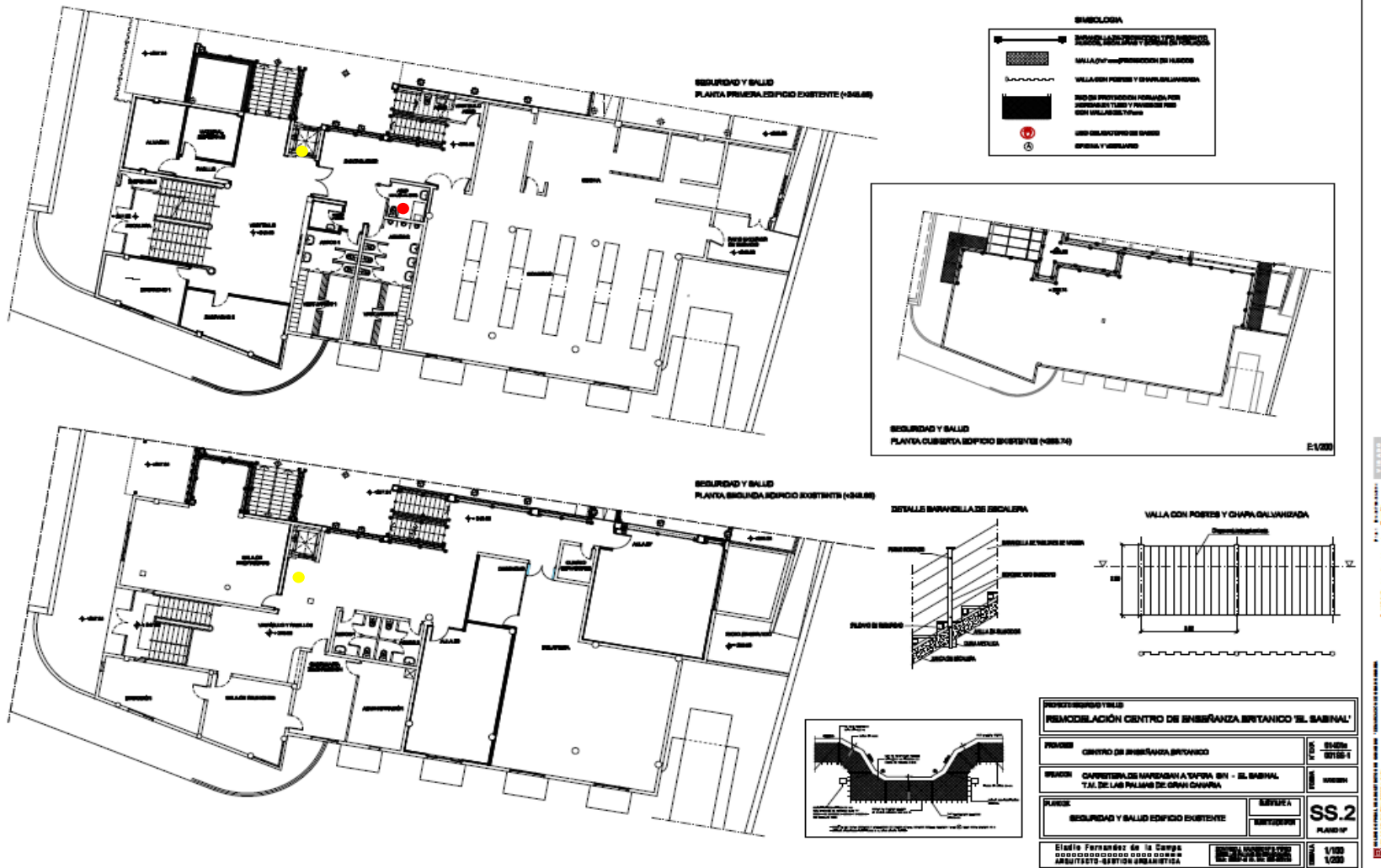
During the academic year 2014-2015 the school buildings underwent substantial refurbishment to improve access and facilities for all pupils, staff and visitors. Ramps were installed to provide wheelchair access to amenities and classrooms on all floors. A lift accesses all floors. There is a toilet with wheelchair access on the first floor. (Appendix 1)

## **6. Current provision – South Site**

The south school has ramp access to the main building via the main entrance. There is a lift that enables access to the first floor. There are toilets with disabled access on both floors of the building. (Appendix 2)

# Appendix A – Tafira Site

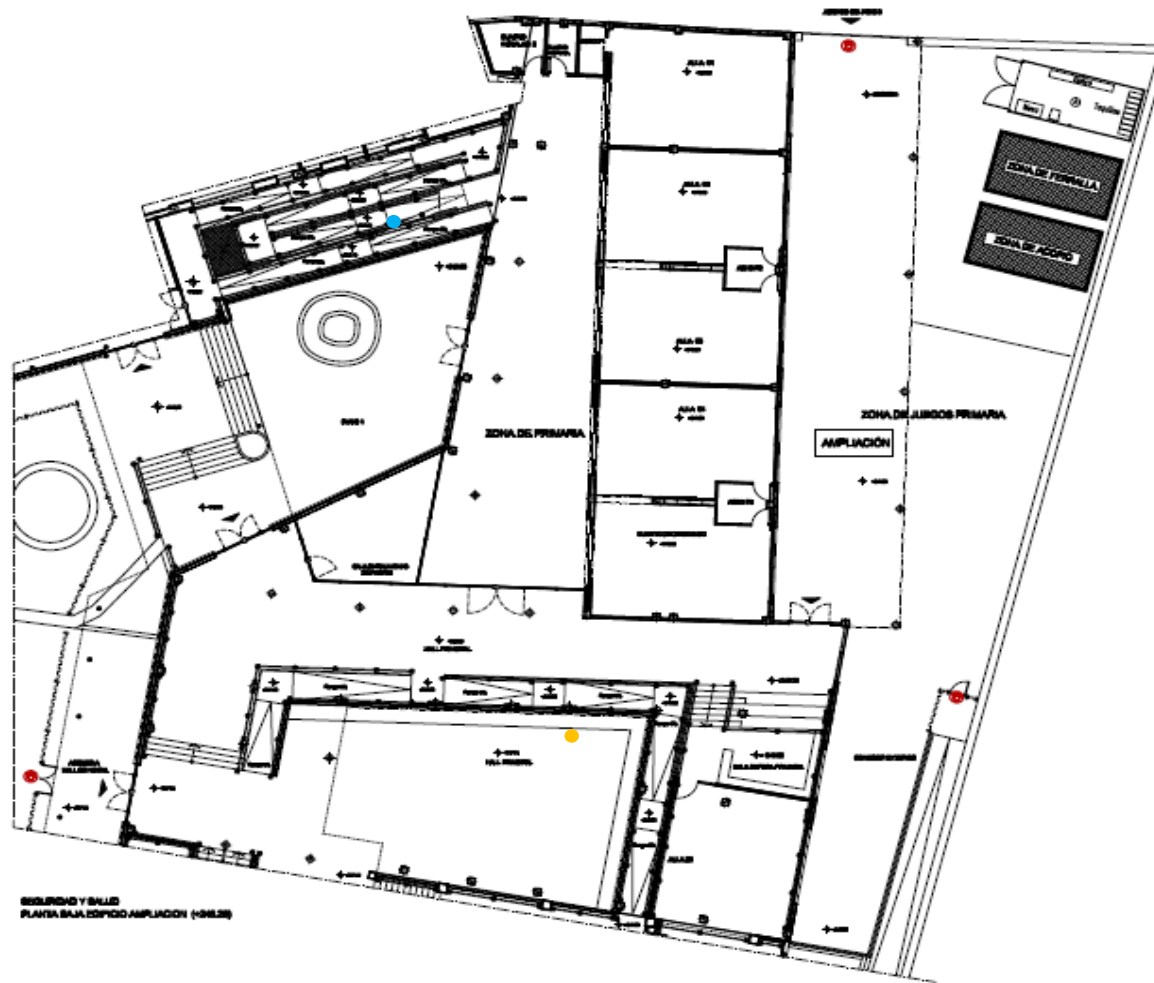
Main building – First and third floors



- Disabled toilet
- Lift to all floors



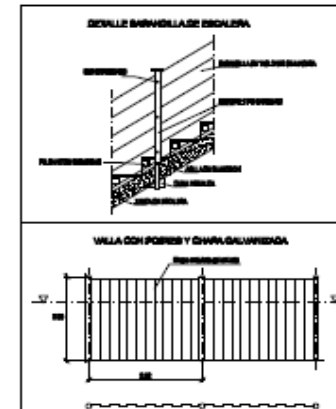
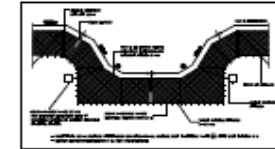
Infant classrooms - second floor



SEGURIDAD Y SALUD  
PLANTA BAJA EDIFICIO AMPLIACION (H08L2)

**SIMBOLOGIA**

	MALLERA DE PROTECCION FUEGO (MANTOS, HUECOS, ESCALERAS Y BARRIO DE PASADIZOS)
	MALLA (7x7 cm) PROTECCION DE HUECOS
	MALLA CON POSTOS Y CARRA GALVANIZADA
	RED DE PROTECCION FUEGO PARA PISOS EN TIERRA Y PISOS DE RED CON MALLAS DE 7x7cm
	USO OBLIGATORIO DE CASCO
	OPERA Y VESTIARIO

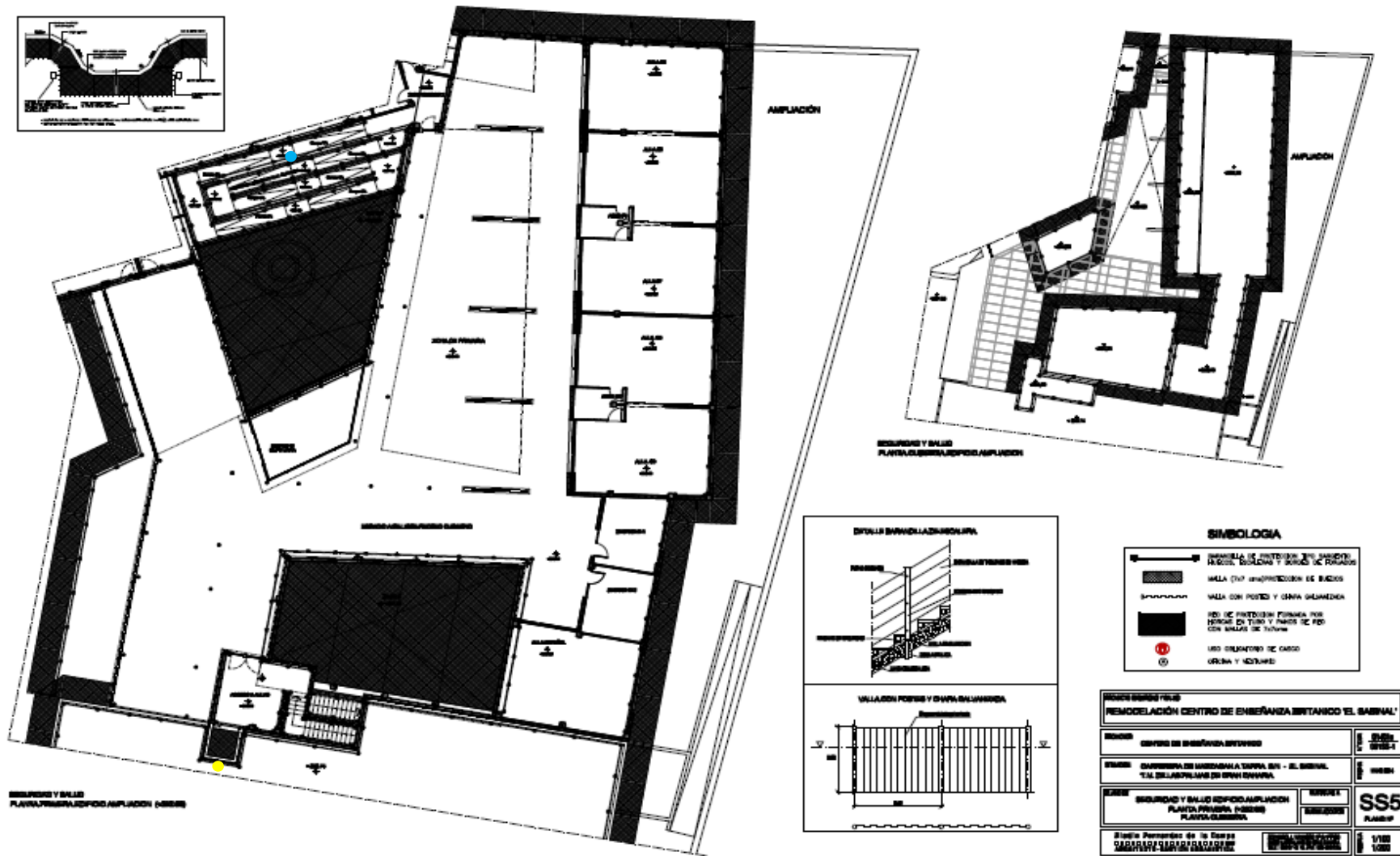


<b>PROYECTO DE OBRAS</b>		<b>REMODELACION CENTRO DE ENSEÑANZA BRITANICO EL SABINAL</b>	
<b>NOMBRE</b>	CENTRO DE ENSEÑANZA BRITANICO	<b>ESCALA</b>	1/100
<b>UBICACION</b>	CARRERA 25 DE MARZO EN LA TAPERA EN EL SABINAL T.M. DE LAS PALMAS DE GRAN CANARIA	<b>FECHA</b>	15/05/2017
<b>PROYECTO</b>	SEGURIDAD Y SALUD EDIFICIO AMPLIACION PLANTA BAJA (H08L2)	<b>SERIE</b>	SS4 PLANTA B
Equipo Proyectista de la Obra: ARQUITECTOS-INGENIEROS EN ARQUITECTURA		Oficina de Proyecto: SS4	
Escala: 1/100		Fecha: 15/05/2017	

ARQUITECTOS-INGENIEROS EN ARQUITECTURA  
 OFICINA DE PROYECTO  
 SS4

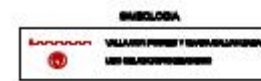
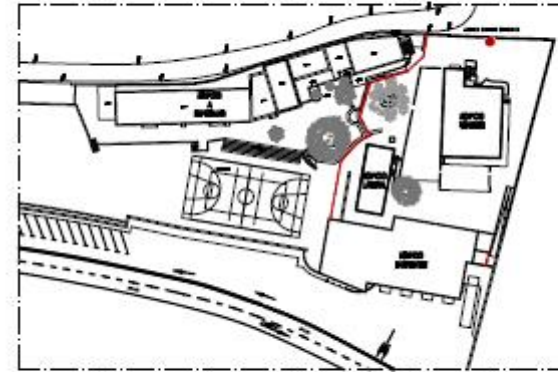
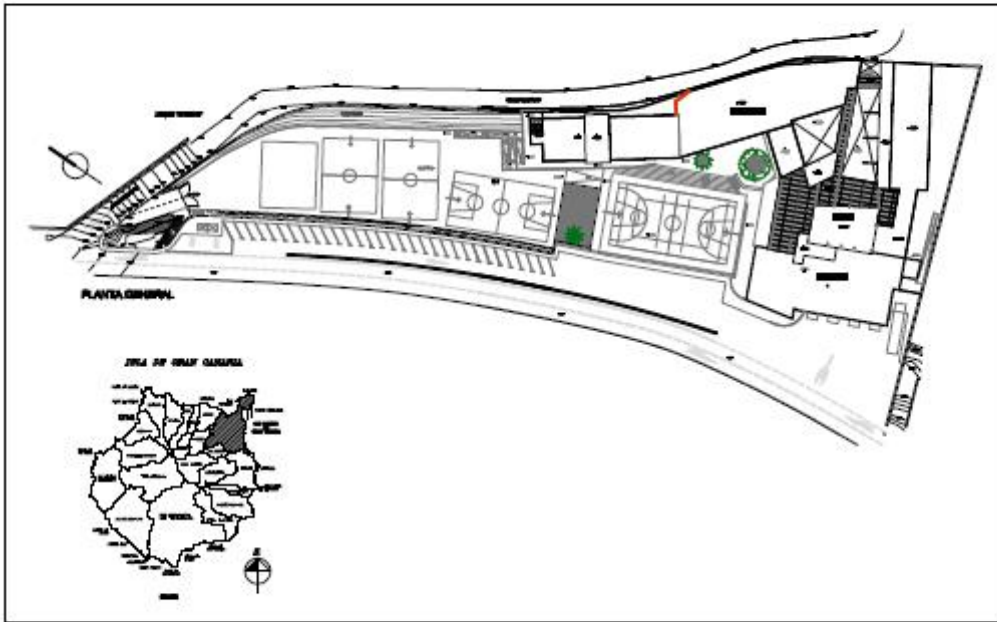
- Ramp to fourth floor and infants
- Ramp to third floor

Primary classrooms – fourth floor



- Lift to all floors
- Ramp to second floor





<b>PROYECTO</b>		<b>REMEDIACION CENTRO ENFERMERIA BRITANICO EL SABNAL</b>	
<b>PROYECTO</b>	CENTRO DE ENFERMERIA BRITANICO	<b>ESCALA</b>	SS1
<b>PROYECTO</b>	CENTRO DE ENFERMERIA A "CIVICA" EN - EL SABNAL - T.M. DE LAS PALMAS DE OCHOA	<b>ESCALA</b>	1:500
<b>PROYECTO</b>	SITUACION Y EMPLAZAMIENTO SEGURIDAD Y SALUD VALLADO PERIMETRO EN ESTADO ACTUAL	<b>ESCALA</b>	<b>SS1</b> PLANTA IP
Oficina: <b>Estudio de Ingeniería de la Construcción</b> Dirección: <b>Carretera a San Juan de los Rios, No. 1000, San Juan de los Rios, Pinar del Rio, Cuba</b>		<b>ESCALA</b>	1:500

ESTUDIO DE INGENIERIA DE LA CONSTRUCCION  
 CUBA  
 CARRETERA A SAN JUAN DE LOS RIOS, NO. 1000, SAN JUAN DE LOS RIOS, PINAR DEL RIO, CUBA



**Appendix B - South Site**

